

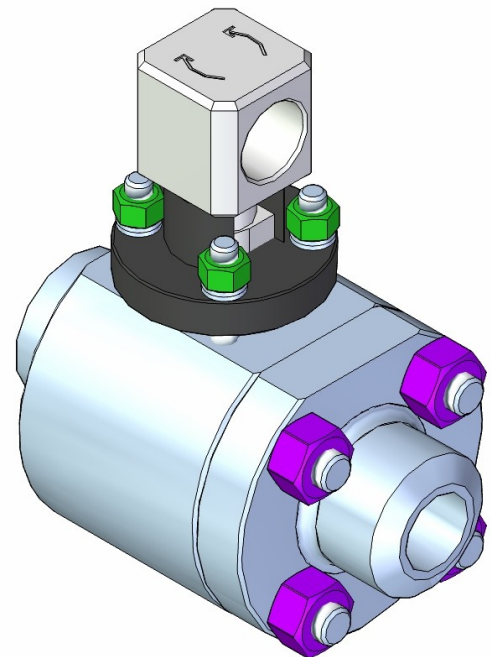
## ***Severe Service Ball Valves***

### ***PC Series - B8 and B9***

**RGR TECHNOLOGIES manufactures one piece and two piece ball valves for severe service applications such as high pressure and high temperature steam, process fluids, highly abrasive slurries, viscous and corrosive liquids and many other applications where conventional valves cannot work.**

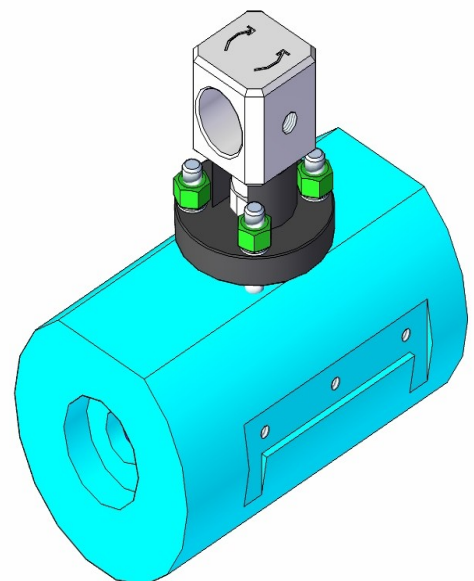
### ***PC Series - B8 and B9 Ball Valves have the following features :-***

- Ball and Seats are coated with a hard metal applied by the HVOF (High Velocity Oxy-Fuel) process
- Blow out proof Stem
- Live loaded Gland Packing
- Machined stops for accurate open and closed positioning
- Forged body components
- Important components are Nitrided to improve wear resistance
- Lever and Actuator operated.
- Complies with ASME B16.34 limited class requirements
- Socket weld ends comply with ASME B16.11



### ***Advantages of Ball Valves over Globe and Gate Valves :-***

- Ball Valves have a quicker quarter-turn, rotary motion to open and close compared to the linear, in and out motion of Globe and Gate valves. This reduces friction and wear in the packing area. The linear motion of the stem in Globe and Gate valves can allow process fluid and solid particles to damage the gland seal and cause leaks.
- The ball valve has a straight flow path through the bore of the valve. Globe valves have a convoluted flow path past the plug and the seat and are subjected to turbulence and high wear.
- The ball of the ball valve is in contact with the seat sealing face when the valve is fully open. This protects the seat faces from erosion. The Globe valve plug and seat are continually exposed to erosion when the valve is open.
- Ball valves are not prone to valve seizure due to thermal shock. The seat and ball expand or contract at the same rate and the belville spring ensures ball to seat contact at all times.
- Ball valves utilizes the fluid pressure to assist with sealing when the valve is closed. Globe valves and some Gate valves require an external force to keep the Globe or Gate in contact with the seat.

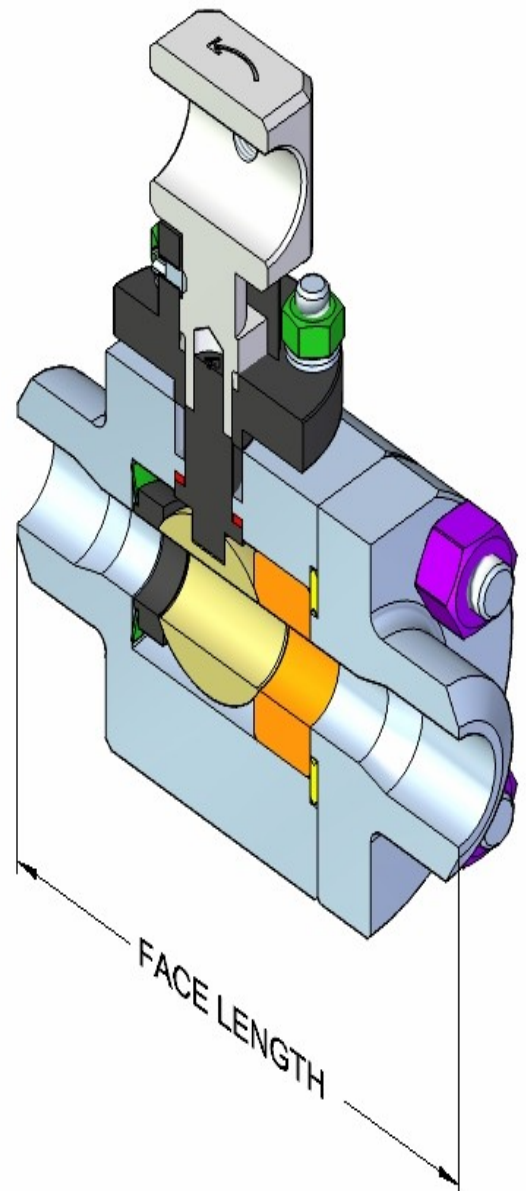


## ***PC Series - B8 Two Piece Ball***

- **ASME 600 to 4500 Limited Class**
- **Butt Weld, Socket Weld and Flanged**

		<b>FACE LENGTH (mm)</b>	
<b>BORE SIZE (mm)</b>	<b>REDUCED BORE (mm)</b>	<b>BUTT OR SOCKET WELD</b>	<b>FLANGED</b>
<b>15</b>	<b>NO</b>	<b>140</b>	<b>216</b>
<b>20</b>	<b>15</b>	<b>140</b>	<b>229</b>
<b>25</b>	<b>20</b>	<b>203</b>	<b>254</b>
<b>32</b>	<b>25</b>	<b>203</b>	<b>279</b>
<b>40</b>	<b>32</b>	<b>203</b>	<b>305</b>
<b>50</b>	<b>40</b>	<b>254</b>	<b>368</b>
<b>65</b>	<b>50</b>	<b>254</b>	<b>419</b>

<b>MATERIALS</b>	<b>STANDARD</b>	<b>ALTERNATIVE</b>
END	SAE 1020 / A105	A182 F11, A182 F316
BODY	SAE 1020 / A105	A182 F11, A182 F316
BALL	431 CHROME CARBIDE	A182 F316 CHROME CARBIDE
SEAT	431 CHROME CARBIDE	A182 F316 CHROME CARBIDE
GUIDE	431 NITRIDED	A182 F316
BELLVILLE SPRING	431	A182 F316
GLAND SPRING	431	A182 F316
STEM	431 NITRIDED	A182 F316 NITRIDED
GLAND	431 NITRIDED	A182 F316 NITRIDED
THRUST WASHER	431 NITRIDED	A182 F316 NITRIDED
DRIVE SHAFT	431 NITRIDED	A182 F316 NITRIDED
BODY GASKET	304 GRAPHITE	316 GRAPHITE
GLAND PACKING	GRAPHOIL RINGS	
GLAND STUD	A193 Gr. B8M	
GLAND NUT	A194 Gr. 8M	
BODY STUD	A193 Gr. B7	A193 Gr. B8M
BODY NUT	A194 Gr. 2H	A194 Gr. 8M

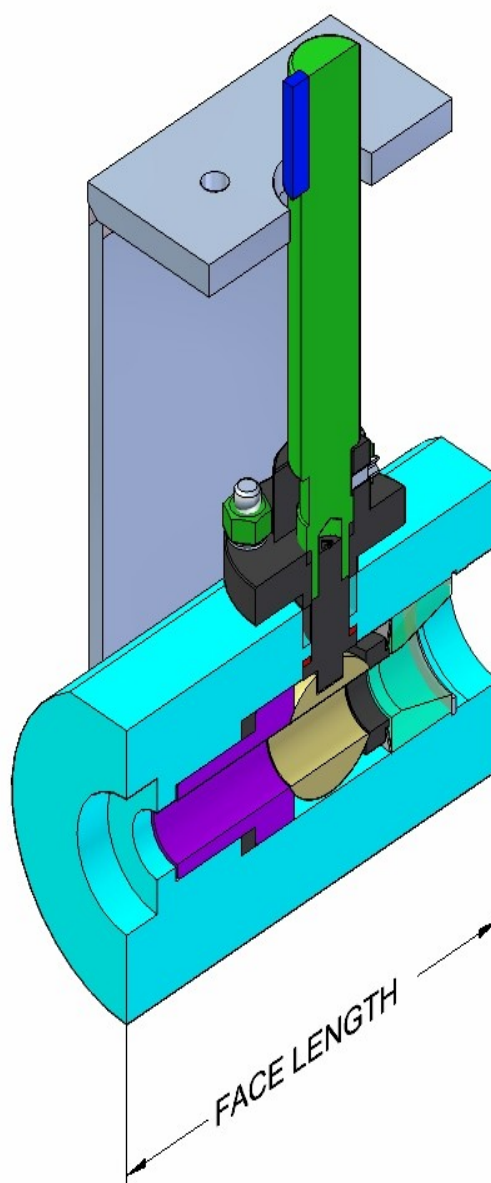


### ***PC Series - B9 One Piece Ball***

- **ASME 600 to 4500 Limited Class**
- **Socket Weld or Butt Weld Only**

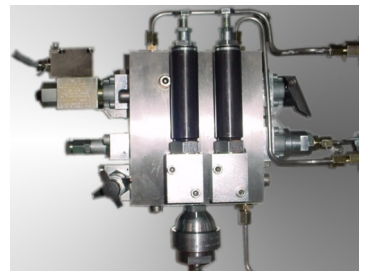
<b>BORE SIZE (mm)</b>	<b>VALVE SIZES (mm)</b>	<b>FACE LENGTH (mm)</b>
<b>15</b>	<b>20, 25, 32</b>	<b>159</b>
<b>20</b>	<b>32, 40, 50</b>	<b>162</b>
<b>25</b>	<b>40, 50</b>	<b>193</b>
<b>32</b>	<b>50, 65</b>	<b>244</b>

<b>MATERIALS</b>	<b>STANDARD</b>	<b>ALTERNATIVE</b>
BODY	SAE 1020 / A105	A182 F11, A182 F316
BALL	431 CHROME CARBIDE	A182 F316 CHROME CARBIDE
SEAT	431 CHROME CARBIDE	A182 F316 CHROME CARBIDE
GUIDE	431 NITRIDED	A182 F316
BELLVILLE SPRING	431	A182 F316
GLAND SPRING	431	A182 F316
STEM	431 NITRIDED	A182 F316 NITRIDED
GLAND	431 NITRIDED	A182 F316 NITRIDED
THRUST WASHER	431 NITRIDED	A182 F316 NITRIDED
DRIVE SHAFT	431 NITRIDED	A182 F316 NITRIDED
CIRCLIP	304	316
GLAND PACKING	GRAPHOIL RINGS	
GLAND STUD	A193 Gr. B8M	
GLAND NUT	A194 Gr. 8M	





## Photo Gallery



### Address:-

#108, 11th Road  
KEW, Gauteng  
South Africa  
2030  
P O Box 1613  
Edenglen  
Gauteng  
South Africa

### Contact details:

#### RGR Technologies (Pty) Ltd

Tel : +27 (0) 11 882 8030

Fax : +27 (0) 11 882 8038

E-mail : sales@rgrtech.co.za

Marketing and Sales – Niven Persad

Mobile : +27 (0) 82 416 4959

Email : nivenp@rgrtech.co.za

Web : www.rgrtech.co.za